

LV JUICE

CABLE & PIPE ENTRIES

CABLE SEALING SYSTEM OPTIONS

- Single wall insert with one-sided connection on the outside of the building
- Double wall insert with connection on both sides
- Single wall insert with plug-in socket
- Slanted wall insert
- System cover with shrink sleeves
- Split system cover
- Flange surface seal
- Floor entry with tight bend radius. Hateflex spiral hose
- HSI 150-SEGMENTO for gentle securing of cables like Fibre
 - Individual clamping of segments
 - Segments can be combined as necessary
 - Gas- and watertight up to 0.5 bar when installed on outside of building



hauff
technik®



HSI 150 - SEGMENTO - with integrated torque control system and blind plugs

FEATURES

- Stepless adjustment to required wall thickness on-site
- Plug-in frame system for block assembly on-site
- Connection of system sealing possible on both sides
- Insert of system covers for sealing of cables and connection of smooth and corrugated ducts

Cable Entry	Suitable Wall Thickness (mm)
HSI 150-K2-VARIA/200-260	200-260
HSI 150-K2-VARIA/260-365	260-365
HSI 150-K2-VARIA/365-470	365-470
HSI 150-K2-VARIA/470-575	470-575



This Month

ESSENTIAL UTILUX CONNECTORS

PAGE 2

LV MULTI-PURPOSE CONNECTOR BLOCKS

PAGE 4

MULTI-COMPARTMENT TOOLBOXES

PAGE 8

FREE TRANSNET
WHILE STOCKS LAST PLAYING CARDS

When you spend over \$500 (excl GST) on one invoice this month





UR2 MOISTURE SEALED CONNECTORS

PROVEN SPlicing TECHNOLOGY DESIGNED FOR YOUR SPECIFIC SPlicing APPLICATIONS

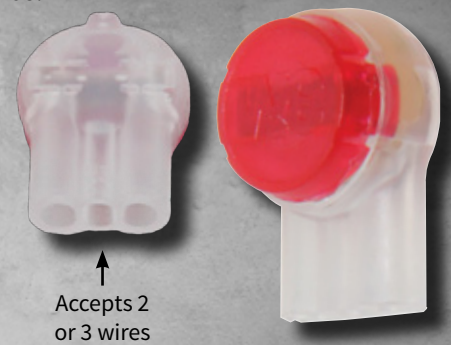
UR2 butt connectors employ a specially designed, wire insulation displacement contact to make a reliable electrical connection to each wire. A “livespring” joint is made by driving the wire down into the “U” contact connector. This simple process displaces the insulation and grasps all conductors with a firm, resilient pressure, all in one motion.

UR2 connectors accept any two or three solid copper conductor combinations of 19-26 AWG (0.9-0.4mm) air core or filled cable with a maximum insulation O.D. of 2.08mm for butt splicing. The wires joined can be of different wire gauges. These connectors are filled with a factory-installed sealant to protect against corrosion and provide moisture resistance.

FEATURES

- Most universal butt connector
- No stripping of the wire insulation is required
- Gel filled for moisture resistance and for PIC cable applications
- UL Listed
- Operating temperature range -40 °C to +60 °C

Product #
H3M-UR2/D20
H3M-UR2/D100



UTILUX METAL P-CLIPS

UTILUX STEEL CABLE CLAMPS

Commonly known as P-Clips, these Utilux steel cable clamps are ideal for securing, grounding and routing cable, wiring, piping, tubing and fibre optics. Constructed from **Zinc plated steel** for additional strength, they are **chemical resistant** and **UV stable**.



Cat No.	Size (mm)	Quantity
H905/150	6.3	150
H906/150	7.9	150
H907/150	11.0	150





GUROSIL-GEL FILLED JUNCTION BOX

Designed to protect electrical connections from the ingress of water as found in rooms with high humidity effects as well as in outdoor applications. GUROSIL-Gel is a soft-elastic hardening, amber cold casting compound based on hydrocarbon resins.

FEATURES AND BENEFITS

- **Self-repairing** and **self-resealing**
- Quick, easy and clean to install using customary caulking guns - no special tools required
- Provides reliable protection against humidity, mechanical shock & vibration
- Soft-elastic, transparent
- IP68 proven casting system
- Easy to remove (GUROSIL-Gel)
- Electrical connections can be tested and repaired quickly even after installation
- Halogen, Silicon and Isocyanate free
- Environmentally friendly

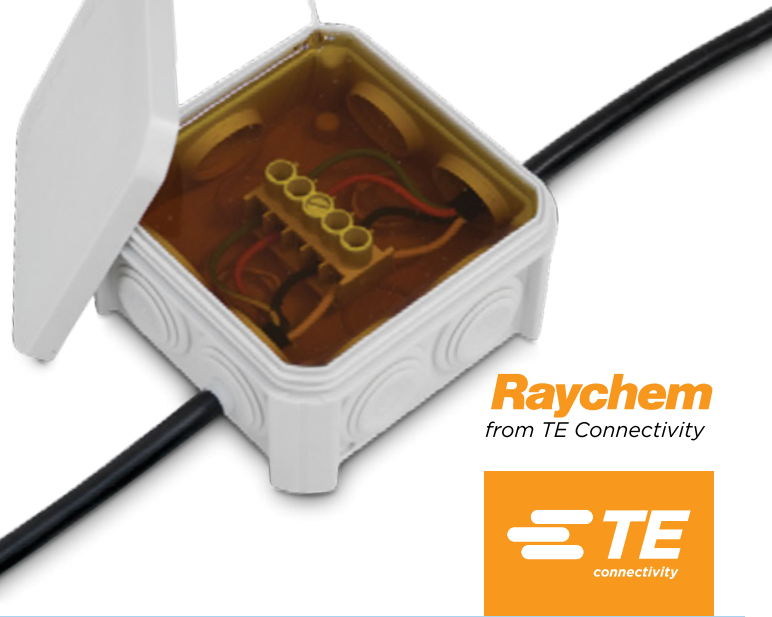


**VIEW GUROSIL-GEL
TECHNICAL DATA**

Durable waterproof connections



Easy and clean to install



Raychem
from TE Connectivity



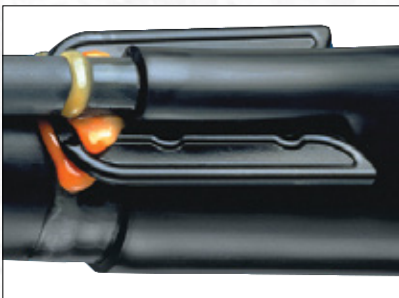
Cat No.	Description
JOR-53800	JUNCTION BOX, TERMINAL STRIP & GUROSIL-GEL CARTRIDGE INCLUDES MIXER
JOR-53801	GUROSIL-GEL CARTRIDGE INCLUDES MIXER, 250ML

BOCL BRANCH OFF CLIP

BOCL adhesive branch off clips provide greater reliability of seal between two cables.

APPLICATIONS

- Sealing at point of cable break out
- Provides environmental seal via heat-activated adhesives
- Clip body holds outer sheath in place while adhesive is melted and bonds
- Available in two sizes



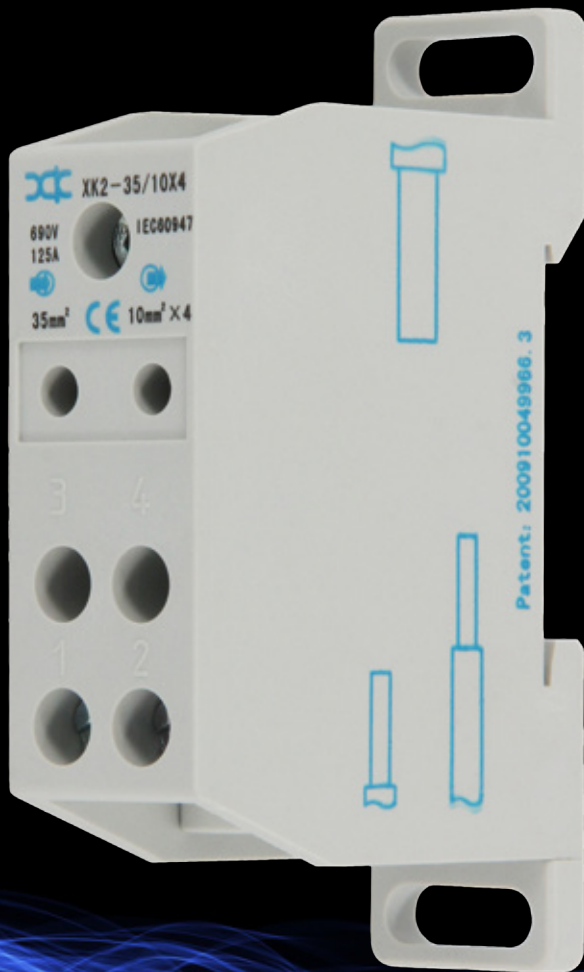
Raychem
from TE Connectivity



Cat No.	Size	Dimensions L x W x D (mm)
BOCL-20-1638CONZ	SMALL	109 X 60 X 12
BOCL-20-1068C004	LARGE	65 X 28 X 10



LV MULTI-PURPOSE CONNECTOR BLOCKS



TNXK235/10X4

XK2 connector blocks are designed for a wide variety of electrical systems. They are a perfect upgrade for busbars, traditional power distribution blocks and strip connections. The unique socket design provides customers safe and reliable installation.

FEATURES

- Provides hundreds of input/output combinations with internal and external parallel connection methods, giving wiring professionals remarkable flexibility
- Low-cost and reliable contact point design
- Supports 10mm²-300mm² in and 1mm²-50mm² out
- Can be mounted on TN 35 DIN rail or on base-plate
- Passed UL 94 V-0 flammability test
- IEC 60529 IP20 rated safety protection
- IEC standard colour code (blue, red, yellow, green, and yellow-green)
- Fit for IEC 60947-7-1

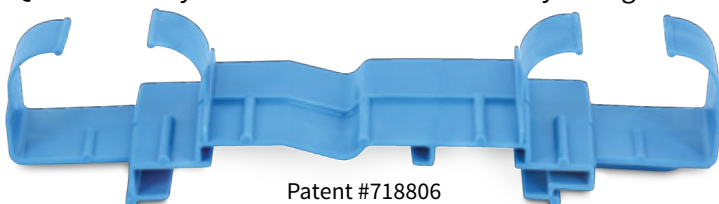
Cat No.	Voltage (V)	Amp Rating (A)	Input Cable Size	Output Cable Size & Quantity
TNXK235/10X4	690	125	10-35 mm ²	4 X 2.5-10 mm ²
TNXK235/4X9	690	125	10-35 mm ²	9 X 1-4 mm ²
TNXK250/10X6	690	150	16-50 mm ²	6 X 2.5-10 mm ²
TNXK270/10X8	690	192	25-70 mm ²	8 X 2.5-10 mm ²
TNXK270/16X6	690	192	25-70 mm ²	6 X 4-16 mm ²
TNXK295/25X4	690	232	25-95 mm ²	4 X 6-25 mm ²
TNXK2120/16X8	690	309	35-120 mm ²	8 X 4-16 mm ²
TNXK2185/35X8	690	353	70-185 mm ²	8 X 10-35 mm ²

WELL-HUNG CABLE SUPPORT BRACKET

The Well-Hung Support Bracket clips or screws to a multitude of batten profiles and trusses, ensuring cables are contained safely within the bracket catchment rather than landing in the batten tray – avoiding the risk of electrocution from screws penetrating up through them. Simplify installation of electrical and data cables on metal formed and wooden ceiling and wall battens.

Features

- Cables securely contained
- Reduced labour costs
- Quick and easy to install
- Ensures tidy wiring



Patent #718806

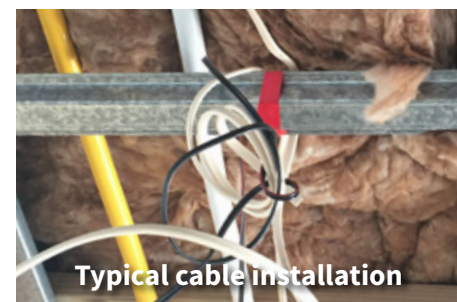
FREE PACK OF CHOCOLATE BLUEBERRIES

with every box of 100 Well-Hung sold this month

Proudly supporting:



*SOLD IN PACKS OF 100



Typical cable installation



Well-Hung installation



OPTIONAL 316 STAINLESS STEEL & GEOMET 321 COATED COMPONENTS FOR COASTAL APPLICATIONS.

RBK disconnectors can come with **316 Stainless Steel** & **GEOMET® 321** coated components in place of the plated components, providing high corrosion resistance for coastal environments – ask us for more info.

The Pro series of RBK switch disconnectors is designed for the distribution of electricity and protection of electrical equipment against short-circuits and overloads with industrial fuse links, & is suitable for installation in low voltage distribution boards, cable and metering cabinets.

HIGH QUALITY MATERIALS

- Thermoplastic parts made of fibre glass strengthened polyamide with halogen-free flame retardant added and with the highest possible flammability class -V0
- Three pole main base with spring-loaded contacts designed for connection of circular or sector-shaped conductors
- Conductors with lug terminals or bars
- Removable cover with fuse links
- Arc chutes with steel deionization plates over top contacts
- Silver plated contacts provide low power loss

MOUNTING

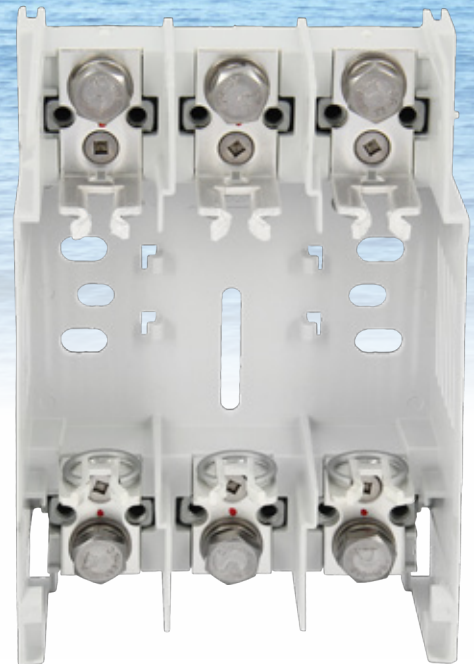
- On mounting plate
 - RBK 00 Pro
 - RBK 1 Pro
 - RBK 2 Pro
 - RBK 3
- On double DIN rail
 - RBK 00 Pro

This range conforms to EN 60947-1, EN 60947-3, IEC 60947-1 and IEC 60947-3 standards.

Models for Din 00-3 sizes available.



RBK HORIZONTAL



APATOR

SLIMLINE FIRE COLLARS BY RYANFIRE



Slimline fire collars consist of a Stainless Steel shell produced in two hinged halves, lined with intumescent material. They are designed to be placed around combustible pipes and fixed to compartment walls and floors with all steel anchors (supplied) in order to provide up to two hours of fire protection.

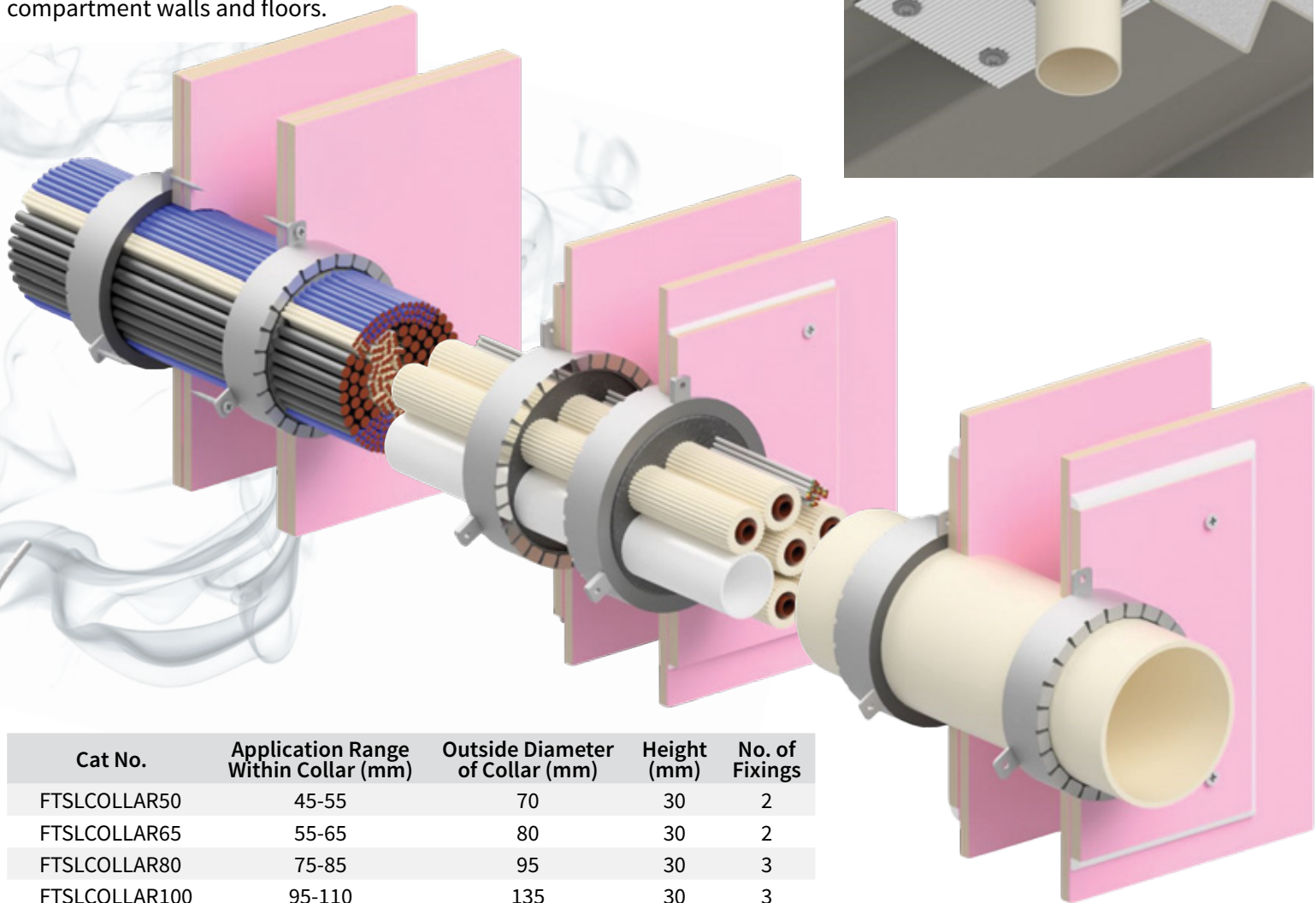
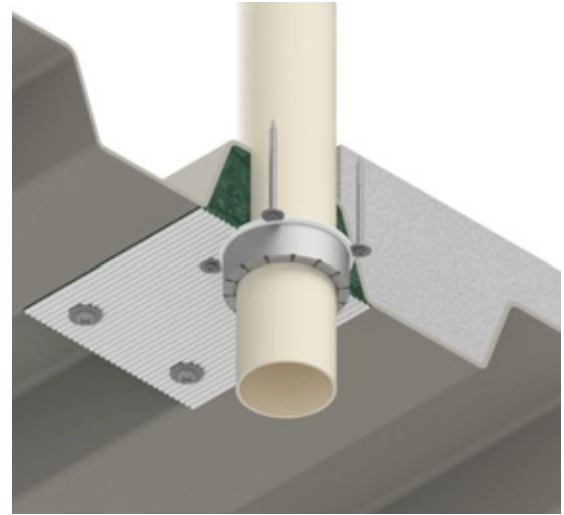
In a fire, the intumescent lining of the metal collar expands and crushes the heat softened plastic pipe leaving a potential path for fire completely sealed.

Applications

Used to seal plastic (PVC-u, PVC, C-PVC, PP, PE, HDPE, PPR, Friatherm and ABS) pipes as they pass through fire compartment walls and floors.

Features

- Ultra-slim flange and body design ensures easy installation in awkward situations
- Simple single click clasp
- Up to 2 hours fire rating, depending on system detail
- Stainless Steel
- Water resistant
- Non-corrosive: inert product
- Range of sizes from 50mm Ø to 160mm Ø



Cat No.	Application Range Within Collar (mm)	Outside Diameter of Collar (mm)	Height (mm)	No. of Fixings
FTSLCOLLAR50	45-55	70	30	2
FTSLCOLLAR65	55-65	80	30	2
FTSLCOLLAR80	75-85	95	30	3
FTSLCOLLAR100	95-110	135	30	3
FTSLCOLLAR125	115-120	145	45	3
FTSLCOLLAR150	145-160	195	45	3

NOTE: This table is a guide only, minimum/maximum sizes may differ depending on the application - please refer to the system datasheet or contact Ryanfire technical for advice.



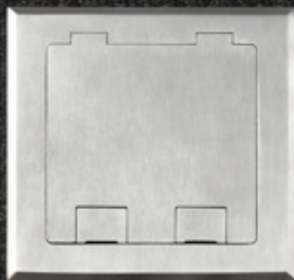


**.cable.
away**

Better Cable
Management



FBSS19R4P4D - FOUR POWER, FOUR DATA



FB145SSF2P3D - TWO POWER, THREE DATA



FB Series Floor Outlet Boxes

Our Cableaway floor outlet boxes are an ideal way to supply power, data and A/V to open floors of a commercial office building or residential home. With a range of size and finishing options there's a floor box to suit any situation.

FBSS19R4P4D - Outlet Box with Recessed Lid

POWDER COATED ZINC ANNEALED
STEEL BODY

STAINLESS STEEL HEIGHT
ADJUSTABLE LID WITH 19MM
RECESS

SINGLE CABLE EXIT FLAP

20MM AND 25MM KNOCKOUTS
PROVIDED FOR EASY CONDUIT
ENTRY

FOUR AUTO SWITCHED POWER
OUTLETS SUPPLIED

PROVISION FOR FOUR CAT5 OR
CAT6 DATA PORTS

Floor box carcass dimensions WxLxH
194x227x90mm (115mm D including lid),
194x230mm lid

FB145SSF2P3D - Outlet Box with Flush Lid

POWDER COATED ZINC ANNEALED
STEEL BODY

STAINLESS STEEL LID & FRAME

DOUBLE CABLE EXIT FLAP

25MM KNOCKOUTS PROVIDED FOR
EASY CONDUIT ENTRY

TWO AUTO SWITCHED POWER
OUTLETS SUPPLIED

PROVISION FOR THREE CAT5 OR
CAT6 DATA PORTS

Floor box carcass dimensions WxLxH
125x125x105mm (110mm H including lid),
145x145mm lid

KIT YOURSELF OUT

Essential Accessories For Any Job



TransNet New Zealand Ltd

Auckland

78 Cryers Road
East Tamaki
Auckland
NEW ZEALAND
Ph 0800 442 182
Fax 0800 442 183
PO Box 39 383
Howick, Auckland

Wellington

10 Petone Ave
Petone
Wellington
NEW ZEALAND
Ph 04 576 2530
Fax 04 576 0040
PO Box 39 383
Howick, Auckland

NEW ZEALAND

sales@transnet.co.nz

TransNet Tonga

Ma'ufanga

Small Industries
Ma'ufanga
TONGA
Ph +67 627 939
Fax +67 627 976
PO Box 2932
Nuku'alofa

TONGA

transnet@kalianet.to

famatel
PROFESSIONAL

Famatel IP67 Industrial Cable Reels

Degree of protection:	IP67
Impact resistance:	IK06
Dimensional stability:	-25°C to +85°C
Glow wire test:	750°C active parts 650°C other parts
Standard:	EN61242



Handle with rubber coating for perfect portability.



Crank for easy handling.



Adjustable brake for cable reeling.



Industrial IP67 plugs and sockets guarantee maximum security in harsh environments.



Automatic cut-out.



Cable exit to help the cable reeling.

Multi-Compartment Toolboxes

\$45.00

+GST each

BOX399

Removable segments

BOX366

TransNet NZ Ltd has made every reasonable effort to ensure the accuracy of this information and it is to the best of our knowledge correct and reliable. Under no circumstances does this constitute an assurance of any particular quality or performance and users should independently evaluate the suitability of products for their desired application. All information in this publication including pricing, drawings, illustrations, images and graphic designs are reflections of our current understanding. TransNet NZ Ltd reserves the right to make any adjustment to this information at any time. Our liability for the products outlined in this publication is set forth in our standard terms and conditions of trade. In case of any potential ambiguities or questions, please contact us for clarification.

